

Sleep Eye

Woody Guthrie



D A7 D

Go to sleep, Go to sleep, Go to sleep-y lit-tle sleep-eye.

D A7 D

Go to sleep, Go to sleep, Go to sleep-y lit-tle sleep-eye.

D A7 D

Clo - sie eye, clo - sie eye, Clo - sie eye, my lit - tle su-gar;

A7 D

One eye closed and two eyes closed; Go to sleep-y, lit-tle sleep-eye.

D A7 D

Go to sleep, Go to sleep, Go to sleep-y lit-tle sleep-eye.

D A7 D

Go to sleep, Go to sleep, Go to sleep-y lit-tle sleep-eye.

D A7 D

Eye - sie close, eye - sie close, Eye - sie closed, my lit - tle su-gar;

A7 D

One hand a-sleep and two hands a-sleep; Go to sleep-y, lit-tle sleep-eye.

D A7 D

33 Go to sleep, Go to sleep, Go to sleep-y lit - tle sleep-eye.

Detailed description: This block contains the first line of music, measures 33 to 36. The key signature has two sharps (F# and C#). The melody starts on a dotted quarter note G4, followed by an eighth note A4, a quarter note B4, and a quarter rest. The lyrics are 'Go to sleep, Go to sleep, Go to sleep-y lit - tle sleep-eye.' The music ends with a double bar line.

D A7 D

37 Go to sleep, Go to sleep, Go to sleep-y lit - tle sleep-eye.

Detailed description: This block contains the second line of music, measures 37 to 40. The melody continues with the same rhythmic pattern as the first line. The lyrics are 'Go to sleep, Go to sleep, Go to sleep-y lit - tle sleep-eye.' The music ends with a double bar line.

D A7 D

41 Dream a dream, dream a dream, Dream a dream, my lit - tle sweet-er;

Detailed description: This block contains the third line of music, measures 41 to 44. The melody starts with a dotted quarter note G4, followed by an eighth note A4, a quarter note B4, and a quarter rest. The lyrics are 'Dream a dream, dream a dream, Dream a dream, my lit - tle sweet-er;'. The music ends with a double bar line.

A7 D

45 Big dream, lit - tle dream, got-ta go dream; Go to sleep-y, lit - tle sleep-eye.

Detailed description: This block contains the fourth line of music, measures 45 to 48. The melody starts with a dotted quarter note G4, followed by an eighth note A4, a quarter note B4, and a quarter rest. The lyrics are 'Big dream, lit - tle dream, got-ta go dream; Go to sleep-y, lit - tle sleep-eye.' The music ends with a double bar line.

D A7 D

49 Go to sleep, Go to sleep, Go to sleep-y lit - tle sleep-eye.

Detailed description: This block contains the fifth line of music, measures 49 to 52. The melody continues with the same rhythmic pattern. The lyrics are 'Go to sleep, Go to sleep, Go to sleep-y lit - tle sleep-eye.' The music ends with a double bar line.

D A7 D

53 Go to sleep, Go to sleep, Go to sleep-y lit - tle sleep-eye.

Detailed description: This block contains the sixth line of music, measures 53 to 56. The melody continues with the same rhythmic pattern. The lyrics are 'Go to sleep, Go to sleep, Go to sleep-y lit - tle sleep-eye.' The music ends with a double bar line.

D A7 D

57 Sleep, sleep, sleep, sleep, Sleep - y, sleep-y, lit - tle sleep-eye;

Detailed description: This block contains the seventh line of music, measures 57 to 60. The melody starts with a dotted quarter note G4, followed by an eighth note A4, a quarter note B4, and a quarter rest. The lyrics are 'Sleep, sleep, sleep, sleep, Sleep - y, sleep-y, lit - tle sleep-eye;'. The music ends with a double bar line.

A7 D

61 Sleep, sleep, sleep, sleep, sleep, sleep, sleep, Sleep - y, sleep-y, lit - tle sleep-eye.

Detailed description: This block contains the eighth line of music, measures 61 to 64. The melody starts with a dotted quarter note G4, followed by an eighth note A4, a quarter note B4, and a quarter rest. The lyrics are 'Sleep, sleep, sleep, sleep, sleep, sleep, sleep, Sleep - y, sleep-y, lit - tle sleep-eye.' The music ends with a double bar line.

Sleep Eye - Vocals

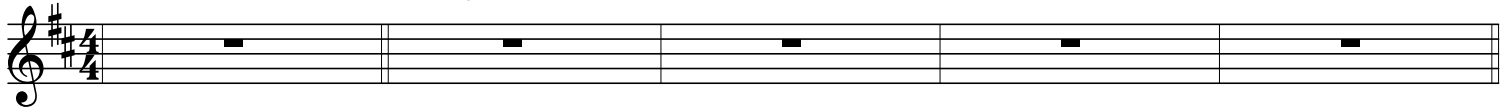
Woody Guthrie

DMaj7

Em7

F#m7

Em7



5 Go to sleep, go to sleep, Go to sleep-y lit-tle sleep--eye.

9 Go to sleep, go to sleep, Go to sleep-y lit-tle sleep--eye.

13 Clo-sie eye, clo-sie eye, Clo-sie eye, my lit-tle su-gar;

17 One eye closed and two eyes closed; Go to sleep-y, lit-tle sleep--eye.

21 Go to sleep, go to sleep, Go to sleep-y lit-tle sleep--eye.

25 Go to sleep, go to sleep, Go to sleep-y lit-tle sleep--eye.

29 Eye-sie close, eye-sie close, Eye-sie closed, my lit-tle su-gar;

33 One hand a-sleep and two hands a-sleep; Go to sleep-y, lit-tle sleep--eye.

D A7 D
37 Go to sleep, go to sleep, Go to sleep-y lit-tle sleep--eye.

D A7 D
41 Go to sleep, go to sleep, Go to sleep-y lit-tle sleep--eye.

D A7 D
45 Dream a dream, dream a dream, Dream a dream, my lit-tle sweet-er;

A7 D
49 Big dream, lit-tle dream, got-ta go dream; Go to sleep-y, lit-tle sleep--eye.

D A7 D
53 Go to sleep, go to sleep, Go to sleep-y lit-tle sleep--eye.

D A7 D
57 Go to sleep, go to sleep, Go to sleep-y lit-tle sleep--eye.

D A7 D
61 Sleep, sleep, sleep, sleep, Sleep-y, sleep-y, lit-tle sleep--eye;

A7 D
65 Sleep, sleep, sleep, sleep, sleep, sleep, sleep, Sleep-y, sleep-y, lit-tle sleep--eye.

D
69 end

Sleep Eye - Orchestral Strings

Woody Guthrie

DMaj7 Em7 F#m7

Em7 D A7

D D

A7 D

D A7

13

This system contains measures 13, 14, and 15. The treble clef staff has whole rests in measures 13 and 14, and a quarter note G4 in measure 15. The bass clef staff starts with a quarter note G2 in measure 13, followed by quarter notes A2, B2, and C3 in measure 14. In measure 15, it features a descending eighth-note line: G2, F2, E2, D2, C2, B1, A1, G1.

D

16

This system contains measures 16, 17, and 18. The treble clef staff has whole rests in all three measures. The bass clef staff has a quarter note G2 in measure 16. In measure 17, there is a long, flat-topped slur covering two octaves from G1 to G3. In measure 18, the bass line continues with quarter notes G2, F2, E2, D2, C2, B1, A1, G1.

A7 D D

19

This system contains measures 19, 20, and 21. The treble clef staff has whole rests in measures 19 and 20, and a quarter note G4 in measure 21. The bass clef staff has a quarter rest in measure 19, followed by a half note G2 in measure 20. In measure 21, it features a descending eighth-note line: G2, F2, E2, D2, C2, B1, A1, G1.

A7 D

22

This system contains measures 22, 23, and 24. The treble clef staff has whole rests in all three measures. The bass clef staff has a quarter note G2 in measure 22, followed by quarter notes A2, B2, and C3 in measure 23. In measure 24, it features a descending eighth-note line: G2, F2, E2, D2, C2, B1, A1, G1.

D A7

25

This system contains measures 25, 26, and 27. The treble clef staff has whole rests in measures 25 and 26, and a quarter note G4 in measure 27. The bass clef staff has a half note G2 in measure 25, followed by quarter notes A2 and B2 in measure 26. In measure 27, there is a quarter rest.

D D A7

28

D

31

A7 D

34

D A7

37

D D A7

40

D D

43

This system contains measures 43, 44, and 45. The treble clef staff has whole rests in all three measures. The bass clef staff starts with a whole rest in measure 43, followed by a half note G2 in measure 44, and a quarter note G2 in measure 45. A slur covers the last two notes of measure 45, which are G2 and A2.

A7 D

46

This system contains measures 46, 47, and 48. The treble clef staff has whole rests in measures 46 and 47, and a half note G2 in measure 48. The bass clef staff has a quarter note G2 in measure 46, followed by a quarter note A2 in measure 47, and a quarter note G2 in measure 48. A slur covers the last two notes of measure 48, which are G2 and A2.

A7

49

This system contains measures 49, 50, and 51. The treble clef staff has whole rests in all three measures. The bass clef staff has a whole note G2 in measure 49, followed by a quarter note A2 in measure 50, and a quarter note G2 in measure 51. A slur covers the last two notes of measure 51, which are G2 and A2.

D D A7

52

This system contains measures 52, 53, and 54. The treble clef staff has whole rests in all three measures. The bass clef staff has a quarter note G2 in measure 52, followed by a quarter note A2 in measure 53, and a quarter note G2 in measure 54. A slur covers the last two notes of measure 54, which are G2 and A2.

D D

55

This system contains measures 55, 56, and 57. The treble clef staff has whole rests in all three measures. The bass clef staff has a quarter note G2 in measure 55, followed by a quarter note A2 in measure 56, and a quarter note G2 in measure 57. A slur covers the last two notes of measure 57, which are G2 and A2.

A7 D

58

D A7

61

D

64

A7 D D

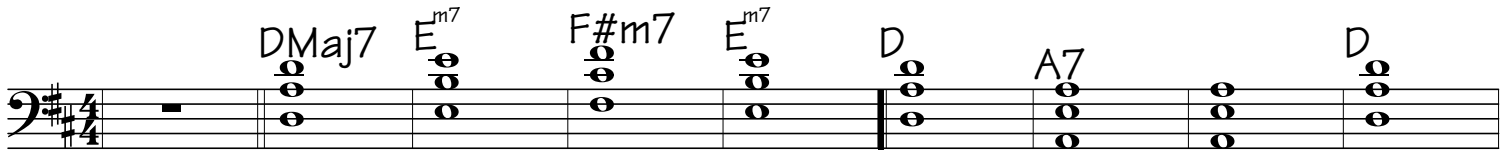
67

70

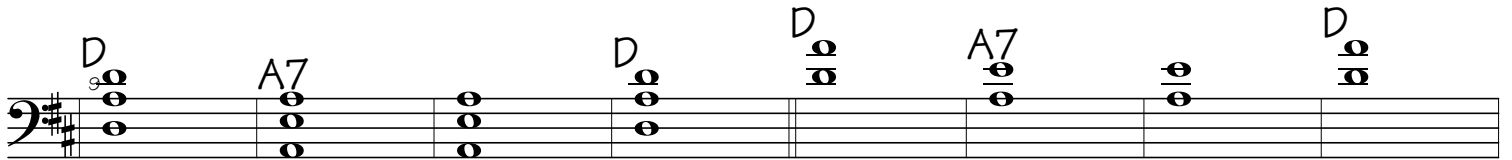
Sleep Eye - Synth Strings #2

Woody Guthrie

DMaj7 E^{m7} F#m7 E^{m7} D A7 D



D₉ A7 D D A7



A7 D D A7 D



D₂ A7 D D A7



A7 D D A7 D



D₄ A7 D D A7 D



A7 D D A7 D



D₅ A7 D D A7 D



A7 D D



Sleep Eye - Pad-Warm (Slow)

Woody Guthrie

DMaj7 E^{m7} F#m7 E^{m7} D A7 D

Musical notation for the first system, measures 1-8. The key signature is one sharp (F#) and the time signature is 4/4. The melody in the treble clef starts with a whole rest in measure 1, followed by quarter notes G4, A4, B4, C5, D5, E5, D5, C5, B4, A4, G4. The bass line in the bass clef starts with a whole rest in measure 1, followed by whole notes: D3 (measure 2), E3 (measure 3), F#3 (measure 4), G3 (measure 5), A3 (measure 6), B3 (measure 7), C4 (measure 8).

D A7 D D A7 D

Musical notation for the second system, measures 9-16. Measures 9-11 contain the melody from the first system. Measure 9 has a '9' below the bass line. Measures 12-16 are whole rests in both staves.

A7 D D A7 D

Musical notation for the third system, measures 17-24. Measures 17-20 are whole rests in both staves. Measure 17 has a '17' below the bass line. Measures 21-24 contain the melody from the first system. Measure 21 has an 'A7' above the treble clef.

D A7 D D A7 D

Musical notation for the fourth system, measures 25-32. Measures 25-27 contain the melody from the first system. Measure 25 has a '25' below the bass line. Measures 28-32 are whole rests in both staves.

A7 D D A7 D

Musical notation for system 1, measures 33-40. The system consists of two staves: a treble clef staff and a bass clef staff. The key signature is one sharp (F#). Measures 33-40 are marked with a double bar line between 33 and 34. Measures 33-34 have whole rests in both staves. Measures 35-40 contain chords and melodic lines. The bass line starts with a whole note chord in measure 35, followed by eighth notes in measures 36-38, and a quarter note in measure 40. The treble line has whole rests in measures 35-38 and a quarter note in measure 40.

D A7 D D A7 D

Musical notation for system 2, measures 41-48. The system consists of two staves: a treble clef staff and a bass clef staff. The key signature is one sharp (F#). Measures 41-48 are marked with a double bar line between 41 and 42. Measures 41-44 contain chords and melodic lines. The bass line starts with a whole note chord in measure 41, followed by eighth notes in measures 42-44, and a quarter note in measure 48. The treble line has a quarter note in measure 41, eighth notes in measures 42-44, and a quarter note in measure 48.

A7 D D A7 D

Musical notation for system 3, measures 49-56. The system consists of two staves: a treble clef staff and a bass clef staff. The key signature is one sharp (F#). Measures 49-56 are marked with a double bar line between 49 and 50. Measures 49-52 have whole rests in both staves. Measures 53-56 contain chords and melodic lines. The bass line starts with a whole note chord in measure 53, followed by eighth notes in measures 54-56, and a quarter note in measure 56. The treble line has a quarter note in measure 53, eighth notes in measures 54-56, and a quarter note in measure 56.

D A7 D D A7 D

Musical notation for system 4, measures 57-64. The system consists of two staves: a treble clef staff and a bass clef staff. The key signature is one sharp (F#). Measures 57-64 are marked with a double bar line between 57 and 58. Measures 57-60 contain chords and melodic lines. The bass line starts with a whole note chord in measure 57, followed by eighth notes in measures 58-60, and a quarter note in measure 64. The treble line has a quarter note in measure 57, eighth notes in measures 58-60, and a quarter note in measure 64.

A7 D D

Musical notation for system 5, measures 65-68. The system consists of two staves: a treble clef staff and a bass clef staff. The key signature is one sharp (F#). Measures 65-68 are marked with a double bar line between 65 and 66. Measures 65-68 have whole rests in both staves.

Sleep Eye - Seashore

Woody Guthrie

DMaj7 E^{m7} F#m7 E^{m7} D A7 D

9 D A7 D D A7 D

17 A7 D D A7 D

25 D A7 D D A7 D

33 A7 D D A7 D

41 D A7 D D A7 D

49 A7 D D A7 D

57 D A7 D D A7 D

65 A7 D D